

FOUR JACKS



45.70M / 149'11"

SPECIFICATION

The Palmer Johnson 150 is one of the most successful fast modern yachts. With a timeless design from Nuvolari Lenard and an interior encompassing 5 staterooms, FOUR JACKS is the perfect summer yacht. She has the preferred layout with master stateroom on deck, four staterooms below and generous crew accommodations. A 'one-owner' yacht, FOUR JACKS has always been operated by a professional crew and maintained in pristine condition. She has Gyro stabilizers for at-anchor stability and regular stabilizers for underway. Together they offer exceptional comfort in all sea conditions.

BUILDER	PALMER JOHNSON
BUILT / REFIT	2008 / 2018
BEAM (M/FT)	8.41M / 27'07"
DRAFT (M/FT)	1.9M / 6'03"
HULL MATERIAL	ALUMINUM
GROSS TONNAGE	395GT
ENGINES	2 x MTU 16V4000M90@3650 HP
SPEED	20 KNOTS / 28 MAX
CLASS	LLOYDS REGISTER, MCA
FLAG	CAYMAN ISLANDS
EXTERIOR DESIGNER	NUVOLARI LENARD
INTERIOR DESIGNER	NUVOLARI LENARD
GUEST /	12 / 5
CREW	8

Yachts offered are subject to availability. The particulars are believed to be correct but are not guaranteed and may not be used for contractual purposes. Specification provided for information only.

MAIN CHARACTERISTICS

Name	FOUR JACKS (Name reserved)	
Builder	Palmer Johnson	
Yacht Design	Nuvolari Lenard	
Dimensions		
LOA	149'11"	45.70m
LWL	124'08"	38.00m
Beam	27'07"	8.41m
Draft	6'03"	1.90m
Gross Tonnage	395	
Net Tonnage	118	
Construction		
Hull	Aluminum	
Superstructure	Aluminum	
Decks	Teak	
Naval Architect	Palmer Johnson	
External Designer	Nuvolari Lenard	
Internal Designer	Nuvolari Lenard	
Classification		
Class	LR ✘ 100A1 SSC Yacht Mono HCS G, LY3 Built to MCA	
Flag	Cayman Islands	
Performance		
Maximum Speed	28 knots	
Cruising Speed	20 knots	
Consumption	75 gph @ 12 knots approx.	
Range	1,450 @ 12 knots	

ACCOMMODATIONS

Guests	12 guests in 5 staterooms
Crew	8 crew in 5 cabins (3 cabins with double berths and 2 cabins with single berths)

KEY FEATURES AT A GLANCE

- 5 staterooms
- Master on deck
- ABT Trac stabilizers underway
- 3 x Seakeeper gyro Model 35 at anchor stabilizers
- 28 knot speeds
- Lloyds ✘ 100A1 SSC Yacht Mono HCS G
- Beautiful interior décor with exotic woods
- Garaged tender
- Shallow draft
- Generous crew quarters

WALKTHROUGH

Flybridge/Sundeck:

There is a centerline staircase down to the pilothouse. To port is an icemaker and a sink in the bar and to starboard there is a BBQ grill and a refrigerator. On either side higher up there are flybridge stations, each with both displays and controls.

Two manual sliding glass doors have access either side to the covered sky deck with fore and aft facing settees around two teak coffee tables, also with loose furniture. There is gym equipment to the starboard side, access down to the main deck on port side and a large circular hot tub on the centerline further aft. Four chaise lounges are further aft.

Pilothouse:

The raised pilothouse has two "Recaro" (STIDD chairs) type chairs, a GMDSS station to port, chart table to starboard and a desk, also to starboard. Stairs go down to the main deck, there is an L shaped settee to port and centerline access to the flybridge aft.

Main Deck:

There are excellent storage lockers outside forward.

The owner's bathroom is further aft with mirror image "his and her" bathrooms with a central shower. The owner's stateroom has a super king-sized bed on the centerline, entertainment center forward and a full walk-in wardrobe behind.

Further aft, under the pilothouse floor is an enormous technical space. On the port side is access down to the crew quarters near a pantry with coffee maker, sink and dishwasher and trash compactor.

The dining salon is open to the main salon and forward with table and ten chairs around.

One of the delightful features of this series of Palmer Johnsons are the port and starboard balconies that open out to the sea on deck, either side of the dining room. Access is through two pantograph doors forward. These balconies are large enough for seating with umbrellas.

The main salon has excellent seating aft in an L shape and there is a stand-up bar to starboard with wine cooler and refrigerator. There are two ways out to the aft deck from the main dining salon; a standard glass door and an electric sliding double glass door out to the aft deck, with a walk-up bar to starboard and storage lockers opposite, underneath the staircase up to the sundeck.

A circular dining table for eight has chairs around and there are easy chairs around a coffee table and bench seating outside on the aft deck. There are massive sun pads behind the seating and port and starboard staircases down to the swim platform and tender garage.

Lower deck:

There are two crew cabins forward with upper and lower berths, each with their own bathroom and each with their own dry shower. There are two more crew cabins further aft, one on the starboard side is furnished with upper and lower berths and en suite, and the one on the port side is the dedicated engineer's cabin, with a desk and bathroom. The captain's cabin is further aft to port with a nice sized bathroom and a desk.

The laundry is opposite the captain's cabin and the main galley is aft, opposite the crew mess. There is an extensive walk-in refrigerator space aft of the galley.

The staircase from the main deck enters the guest area forward. There is a day bathroom at the foot of the stairs.

There are two twin bedded staterooms, each with the ability to slide the beds together for a king bed and each with Pullman berths. Each has an en suite bathroom with shower. Further aft there are two queen staterooms, each with en suites with showers. These bathrooms insulate the stateroom area from the engine room which is further aft.

The tender garage is further aft of the engine room with HI-FOG equipment, diving compressor and Novurania tender, 2 Sea-Doos and 2 Seabobs. A massive swim platform serves this toy set up area.

MAIN MACHINERY

Engines	2 x MTU - 16V4000Mgo @ 3650hp each	
Engine Hours (October 2022)	Port: 6,418	Stbd: 6,422
	(6,000 hour service 6/20)	
Generators	2 x KiloPak 70kW	
Generator hours (October 2022)	Port: 11,663	Stbd.: 11,665
	(2,000 hour service 7/22)	
Steering & Propulsion	ZF gearbox 7550 3.074/1 ratio	
Gearbox		
Auxiliary Equipment		
Bow Thruster	American Bow Thruster	
Water Maker	FCI Model # NWM2535 3X	
Stabilizers	ABT Trac Underway	
Gyro-Stabilizers	3 x SeaKeeper Model 35 (Zero Speed at anchor)	
Fuel Separator	Alfa Laval MAB-104B	
Air Conditioning	Cruise Air 3 x Scroll Compressors	
Wastewater Treatment	Hamann	
Toilet System	EVAC	
Boilers	2 x 48USG (182L)	

TANKAGE

Fuel	10,690USG	40,466L
Lubrication Oil	615USG	2,328L
Dirty lube Oil	615USG	2,328L
Fresh Water	1,460USG	5,527L
Grey Water/Black	456USG	1,726L

ELECTRICAL SYSTEM

Voltage	520V - 170V
Frequency	50Hz and 60Hz
Shore Power Converter	A/SEA Power Systems model # AC54V-3 x 2
110V Power Converter:	A/SEA Power Systems model # AC18
Batteries	Start 2 x 24V (8 battery bank)
Service	1 x 24V (2 battery bank)
Emergency	1 x 24V (6 battery bank)

NAVIGATION EQUIPMENT

Magnetic Compass	Ritchie
------------------	---------

AIS	Furuno FA-150
Sonar	N/A
Autopilot	Simrad AP50
Radar	2X Furuno (new gearbox, transceiver, magnetrons 7/20)
Electronic Chart System	2X Nobeltec Timezero
GPS	Furuno GPS Navigator GP-150
Wind, Speed, & Direction	B&G H3000

COMMUNICATION AND SATELLITE EQUIPMENT

Inmarsat C	Furuno Felcom 15
SSB Radio	Furuno
VHF	2 x Furuno and 1 Simrad RS87 (repeater in crew mess)
VHF Hand Held Radio	2 x ICOM
Printer/Fax	Furuno

AUDIO AND VISUAL EQUIPMENT

TV / Movie Archive	LG / Kaleidescape System
Guest AV System	Savant Pro (host upgrade 11/20)
Crew AV System	Crestron

DOMESTIC APPLIANCES, EQUIPMENT AND LAUNDRY

Refrigeration	Bush Refrigeration custom walk in / 2X Sub Zero 700TF
	Salon Bar: Frigonautica FRS160AC
	Wine coolers: Frigonautica & Avintage
Freezer	Sub Zero 700TF
Oven	Top: Gaggenau
	Bottom: Miele
Stove	Gaggenau
Microwave	Gaggenau
Icemaker	2 x Hoshizaki
Dishwasher	2 x Miele
Washing Machine	2 x Miele PW 6065 Plus
Dryers	2 x Miele PT 7135C Plus

DECK EQUIPMENT

Anchors & Chain	2 x Kedge 175KG / chain, 2 x 5/8" diameter, 500' length
Tender Cradle	Super winch
Windlass	2 x Maxwell 8000
Passerelle	Sanguinetti Shavari
Bathing Ladder	Sanguinetti Shavari
Stern Capstans	2 x Maxwell 6000

SAFETY AND FIRE PROTECTION

EPIRB	3 x ACR 406Mhz Global Positioning
Life Rafts	4 x Viking 12DK + 12 person
Life Jackets/Immersion Suits:	15 x adult inflatable life jackets
	22 x Stearns adult USCG approved offshore PFDs
	26 x immersion suits (4 child, 2 XL, 20 adult)
	3 x Stearns Child USCG approved

Fire Fighting Equipment	30 x fire extinguishers Fixed NOVEC system for engine room Danfoss Semco: Sem-Safe Watermist System (hi fog) 2 x Innotex firefighting suits 4 x Drager SCBA tanks
Ship Alarms	Night Watch System
Bilge & Fire Pumps	MP 21865
Emergency Fire/Bilge pump	Yanmar
Searchlight	2 x ACR
Security Cameras	7 x Axis Dome camera network, forward & aft FLIR cameras
Ship Safes	Honeywell

TENDERS AND TOYS

Tender	19' Novurania – diesel jet
Toys	2 x SeaDoo RXP255 2 x Seabob F5-S
Dive Compressor	Bauer Junior II

MAINTENANCE HIGHLIGHTS

Summer 2020 Highlights

- Complete rebuild of passarelle, swim ladder, and garage cradle hydraulic systems
- 2000-hour Seakeeper gyro stabilizer service performed
- 6000-hour service performed on MTU main engines
- Replacement or servicing and hydro-testing of all through-hull valves
- Replacement of port generator end bearing and reconditioning of electrical winding
- Top-end service on both generators
- Engine room dampeners replaced
- Starboard side engine room ventilation fans rebuilt
- Replacement of both radar magnetrons, gearboxes, and transceivers
- Entire HVAC ducting system including all air handlers cleaned and disinfected

Summer 2021 Highlights

- Replacement of starboard generator end bearing and reconditioning of electrical winding
- Port side engine room ventilation fans rebuilt
- Both shafts pulled, rolled, and dye-pen tested
- Both props pulled, re-conditioned, and dye-pen tested
- Geislinger couplers reconditioned
- Main engine motor mounts replaced
- Transmission mounts replaced.
- Bearings and chockfast mounts replaced
- FOUR JACKS was targeted prior to haul-out, multiple laser alignments performed, chockfast hardness tested, and post work sea trial with vibration analysis completed
- All three main breakers replaced
- Port and starboard Maxwell anchor windless serviced including the removal of the gearboxes
- Bow thruster serviced

Summer 2022 Highlights

- 2000-hour service performed on both generators
- Aft capstans removed and serviced

EXCLUSIONS

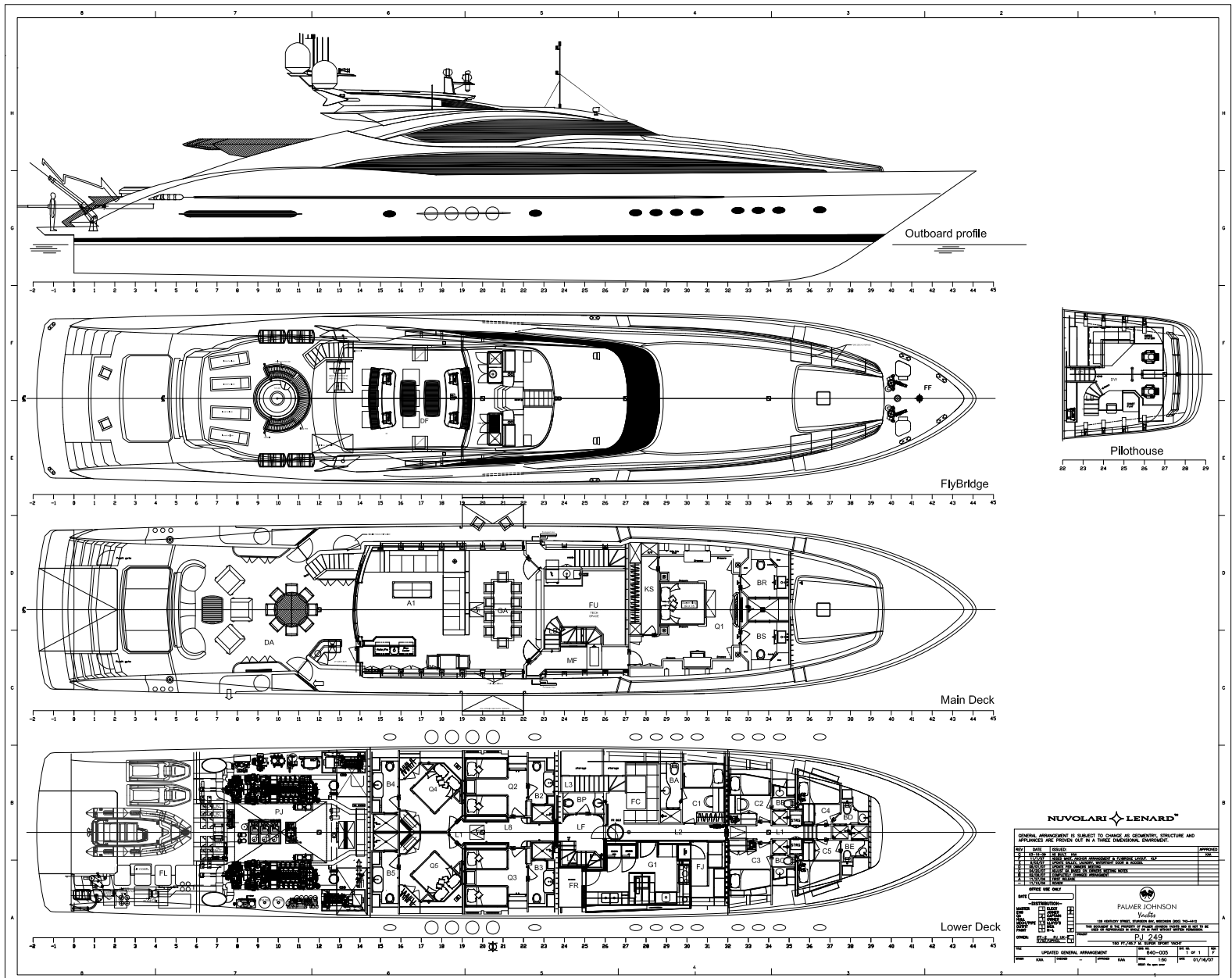
A detailed exclusion list will be provided pursuant to contract.

The name FOUR JACKS is reserved

Please note

All speeds, capacities, consumption, hours, measurements, etc. are approximate or estimated. Specifications provided for information only as particulars herein obtained are from sources available but are not guaranteed. Remarks and other statements may be personal opinions and may not be relied upon. Interested parties should instruct his/her agent/supervisor to check all details for accuracy.

GENERAL ARRANGEMENT PLAN



NUVOLARI LENARD™

GENERAL ARRANGEMENT IS SUBJECT TO CHANGE AS GEOMETRY, STRUCTURE AND APPLIANCES ARE PROVIDED IN A THREE DIMENSIONAL CONCEPT.

REV	DATE	DESCRIPTION	APPROVED
01	12/14/07	ISSUED FOR CONSTRUCTION	
02	01/15/08	REVISED TO REFLECT CHANGES TO THE PLAN	
03	02/15/08	REVISED TO REFLECT CHANGES TO THE PLAN	
04	03/15/08	REVISED TO REFLECT CHANGES TO THE PLAN	
05	04/15/08	REVISED TO REFLECT CHANGES TO THE PLAN	
06	05/15/08	REVISED TO REFLECT CHANGES TO THE PLAN	
07	06/15/08	REVISED TO REFLECT CHANGES TO THE PLAN	
08	07/15/08	REVISED TO REFLECT CHANGES TO THE PLAN	
09	08/15/08	REVISED TO REFLECT CHANGES TO THE PLAN	
10	09/15/08	REVISED TO REFLECT CHANGES TO THE PLAN	
11	10/15/08	REVISED TO REFLECT CHANGES TO THE PLAN	
12	11/15/08	REVISED TO REFLECT CHANGES TO THE PLAN	
13	12/15/08	REVISED TO REFLECT CHANGES TO THE PLAN	
14	01/15/09	REVISED TO REFLECT CHANGES TO THE PLAN	
15	02/15/09	REVISED TO REFLECT CHANGES TO THE PLAN	
16	03/15/09	REVISED TO REFLECT CHANGES TO THE PLAN	
17	04/15/09	REVISED TO REFLECT CHANGES TO THE PLAN	
18	05/15/09	REVISED TO REFLECT CHANGES TO THE PLAN	
19	06/15/09	REVISED TO REFLECT CHANGES TO THE PLAN	
20	07/15/09	REVISED TO REFLECT CHANGES TO THE PLAN	
21	08/15/09	REVISED TO REFLECT CHANGES TO THE PLAN	
22	09/15/09	REVISED TO REFLECT CHANGES TO THE PLAN	
23	10/15/09	REVISED TO REFLECT CHANGES TO THE PLAN	
24	11/15/09	REVISED TO REFLECT CHANGES TO THE PLAN	
25	12/15/09	REVISED TO REFLECT CHANGES TO THE PLAN	
26	01/15/10	REVISED TO REFLECT CHANGES TO THE PLAN	
27	02/15/10	REVISED TO REFLECT CHANGES TO THE PLAN	
28	03/15/10	REVISED TO REFLECT CHANGES TO THE PLAN	
29	04/15/10	REVISED TO REFLECT CHANGES TO THE PLAN	
30	05/15/10	REVISED TO REFLECT CHANGES TO THE PLAN	
31	06/15/10	REVISED TO REFLECT CHANGES TO THE PLAN	
32	07/15/10	REVISED TO REFLECT CHANGES TO THE PLAN	
33	08/15/10	REVISED TO REFLECT CHANGES TO THE PLAN	
34	09/15/10	REVISED TO REFLECT CHANGES TO THE PLAN	
35	10/15/10	REVISED TO REFLECT CHANGES TO THE PLAN	
36	11/15/10	REVISED TO REFLECT CHANGES TO THE PLAN	
37	12/15/10	REVISED TO REFLECT CHANGES TO THE PLAN	
38	01/15/11	REVISED TO REFLECT CHANGES TO THE PLAN	
39	02/15/11	REVISED TO REFLECT CHANGES TO THE PLAN	
40	03/15/11	REVISED TO REFLECT CHANGES TO THE PLAN	
41	04/15/11	REVISED TO REFLECT CHANGES TO THE PLAN	
42	05/15/11	REVISED TO REFLECT CHANGES TO THE PLAN	
43	06/15/11	REVISED TO REFLECT CHANGES TO THE PLAN	
44	07/15/11	REVISED TO REFLECT CHANGES TO THE PLAN	
45	08/15/11	REVISED TO REFLECT CHANGES TO THE PLAN	
46	09/15/11	REVISED TO REFLECT CHANGES TO THE PLAN	
47	10/15/11	REVISED TO REFLECT CHANGES TO THE PLAN	
48	11/15/11	REVISED TO REFLECT CHANGES TO THE PLAN	
49	12/15/11	REVISED TO REFLECT CHANGES TO THE PLAN	
50	01/15/12	REVISED TO REFLECT CHANGES TO THE PLAN	
51	02/15/12	REVISED TO REFLECT CHANGES TO THE PLAN	
52	03/15/12	REVISED TO REFLECT CHANGES TO THE PLAN	
53	04/15/12	REVISED TO REFLECT CHANGES TO THE PLAN	
54	05/15/12	REVISED TO REFLECT CHANGES TO THE PLAN	
55	06/15/12	REVISED TO REFLECT CHANGES TO THE PLAN	
56	07/15/12	REVISED TO REFLECT CHANGES TO THE PLAN	
57	08/15/12	REVISED TO REFLECT CHANGES TO THE PLAN	
58	09/15/12	REVISED TO REFLECT CHANGES TO THE PLAN	
59	10/15/12	REVISED TO REFLECT CHANGES TO THE PLAN	
60	11/15/12	REVISED TO REFLECT CHANGES TO THE PLAN	
61	12/15/12	REVISED TO REFLECT CHANGES TO THE PLAN	
62	01/15/13	REVISED TO REFLECT CHANGES TO THE PLAN	
63	02/15/13	REVISED TO REFLECT CHANGES TO THE PLAN	
64	03/15/13	REVISED TO REFLECT CHANGES TO THE PLAN	
65	04/15/13	REVISED TO REFLECT CHANGES TO THE PLAN	
66	05/15/13	REVISED TO REFLECT CHANGES TO THE PLAN	
67	06/15/13	REVISED TO REFLECT CHANGES TO THE PLAN	
68	07/15/13	REVISED TO REFLECT CHANGES TO THE PLAN	
69	08/15/13	REVISED TO REFLECT CHANGES TO THE PLAN	
70	09/15/13	REVISED TO REFLECT CHANGES TO THE PLAN	
71	10/15/13	REVISED TO REFLECT CHANGES TO THE PLAN	
72	11/15/13	REVISED TO REFLECT CHANGES TO THE PLAN	
73	12/15/13	REVISED TO REFLECT CHANGES TO THE PLAN	
74	01/15/14	REVISED TO REFLECT CHANGES TO THE PLAN	
75	02/15/14	REVISED TO REFLECT CHANGES TO THE PLAN	
76	03/15/14	REVISED TO REFLECT CHANGES TO THE PLAN	
77	04/15/14	REVISED TO REFLECT CHANGES TO THE PLAN	
78	05/15/14	REVISED TO REFLECT CHANGES TO THE PLAN	
79	06/15/14	REVISED TO REFLECT CHANGES TO THE PLAN	
80	07/15/14	REVISED TO REFLECT CHANGES TO THE PLAN	
81	08/15/14	REVISED TO REFLECT CHANGES TO THE PLAN	
82	09/15/14	REVISED TO REFLECT CHANGES TO THE PLAN	
83	10/15/14	REVISED TO REFLECT CHANGES TO THE PLAN	
84	11/15/14	REVISED TO REFLECT CHANGES TO THE PLAN	
85	12/15/14	REVISED TO REFLECT CHANGES TO THE PLAN	
86	01/15/15	REVISED TO REFLECT CHANGES TO THE PLAN	
87	02/15/15	REVISED TO REFLECT CHANGES TO THE PLAN	
88	03/15/15	REVISED TO REFLECT CHANGES TO THE PLAN	
89	04/15/15	REVISED TO REFLECT CHANGES TO THE PLAN	
90	05/15/15	REVISED TO REFLECT CHANGES TO THE PLAN	
91	06/15/15	REVISED TO REFLECT CHANGES TO THE PLAN	
92	07/15/15	REVISED TO REFLECT CHANGES TO THE PLAN	
93	08/15/15	REVISED TO REFLECT CHANGES TO THE PLAN	
94	09/15/15	REVISED TO REFLECT CHANGES TO THE PLAN	
95	10/15/15	REVISED TO REFLECT CHANGES TO THE PLAN	
96	11/15/15	REVISED TO REFLECT CHANGES TO THE PLAN	
97	12/15/15	REVISED TO REFLECT CHANGES TO THE PLAN	
98	01/15/16	REVISED TO REFLECT CHANGES TO THE PLAN	
99	02/15/16	REVISED TO REFLECT CHANGES TO THE PLAN	
100	03/15/16	REVISED TO REFLECT CHANGES TO THE PLAN	

OFFICE USE ONLY

DESIGNED BY: PALMER JOHNSON
 DRAWN BY: [Name]
 CHECKED BY: [Name]
 APPROVED BY: [Name]

PROJECT: PU 249
 180' YACHT - FOUR JACKS

UPDATED GENERAL ARRANGEMENT 840-005 11' of 11
 180' YACHT - FOUR JACKS 01/14/07